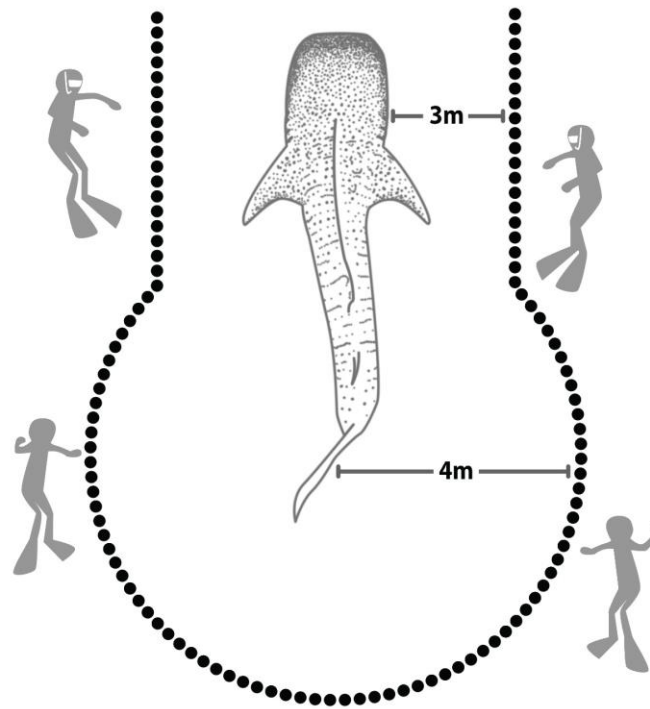


# Whale Shark Interaction Guidelines

for tourist safety and to lessen disturbance to the whale shark



## Respecting the shark will ensure a better interaction



Based on international guidelines  
**Motor boats should maintain a minimum distance of 20 meters from the shark.**



**Do not touch the shark.**  
It could react violently or swim away, leading to a shorter interaction.



**No more than one boat per shark.**



**Scuba diving is strictly prohibited.**



**No flash photography.**  
Whale sharks are very sensitive to light.



**Keep a minimum distance of 3 meters from the head and body of the shark and 4 meters from the tail** (Approximately one shark body length).

## ... and other environmentally friendly practices:



**Do not throw trash in the water.**

The sharks may accidentally swallow it!



**Do not touch or remove coral, shells or seagrass.**

A healthy coral reef is essential to the whale sharks food.



**No feeding of wildlife.**



**Avoid splashing.**

It can disturb the shark.

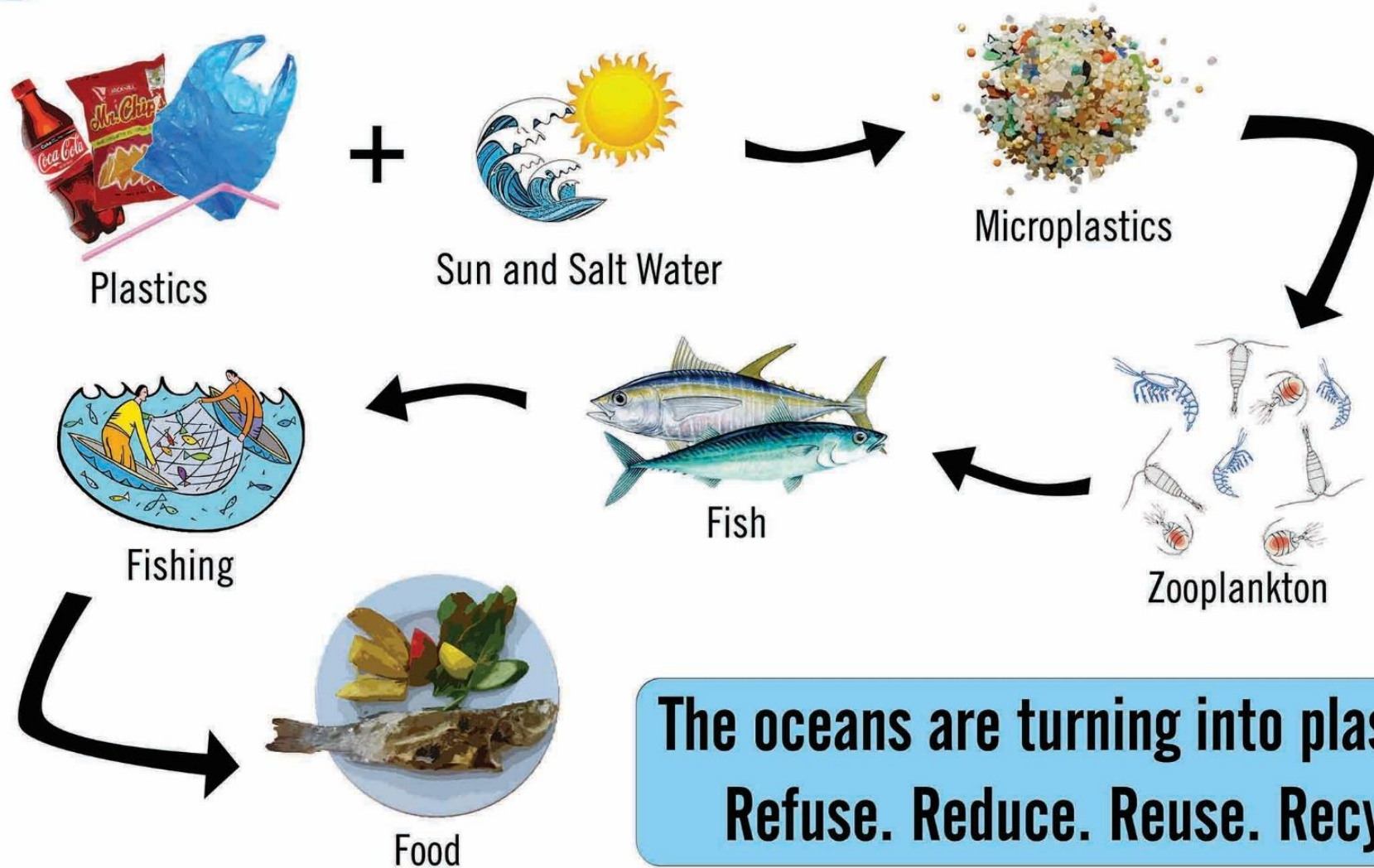


**Thank you for your cooperation.**

For more information visit: [www.lamave.org](http://www.lamave.org)



# Plastics in the Food Chain



**The oceans are turning into plastic.  
Refuse. Reduce. Reuse. Recycle.**

# BE A WHALE SHARK SCIENTIST!



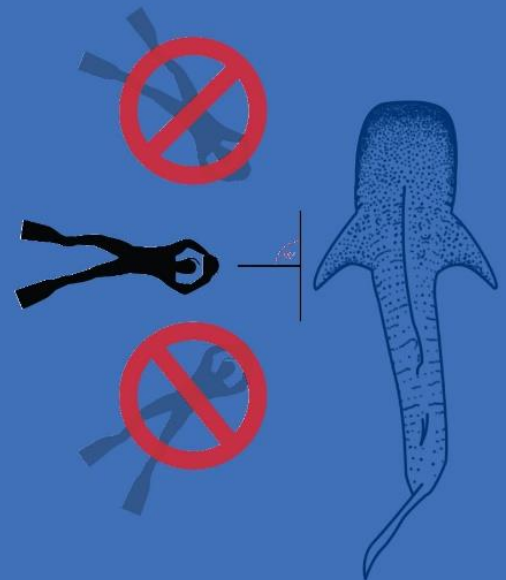
HELP SCIENTISTS AROUND THE WORLD DISCOVER  
MORE ABOUT THE BIGGEST FISH IN THE SEA  
From their numbers and habitats to their migratory pathways

## TAKE THE PERFECT IDENTIFICATION PHOTOGRAPH



- Take a photo of the left side.
- Stay at least 4m away from the shark.

- Aim for the portion just behind the gills.
- Get level and perpendicular to the shark.



If possible you should also try to take a photograph of the right side of the shark,  
as well as a shot of the sharks genitals.

Don't forget to record the following information:

- Location
- Water Depth
- Date
- Estimated Size
- Time

Submit your photographs and  
research data to [info@lamave.org](mailto:info@lamave.org)



Thank you in advance for helping to  
protect the world's largest fish!

For more information, visit: [www.lamave.org](http://www.lamave.org)

