

A glimpse of the activities undertaken by the RSGF supported project on 'Strengthening the community-based dolphin conservation programme in Brahmaputra river system, India'.



Fig-1: The boat 'S. B. Kahua' constructed with the help of RSGF Grant. This is a great resource for the long term research and conservation works on the Brahmaputra dolphin and wider riverine ecosystem



Fig-2: The boat 'S. B. Kahua' during Brahmaputra dolphin survey, 2012. Here two observer teams, each comprising of 3 members are conducting dolphin survey in Brahmaputra River.



Fig-3: The boat 'S. B. Kahua' was widely used in winter, 2011-12 for conducting dolphin conservation awareness campaign. Here the education team is performing a drama on dolphin conservation in the river side, using the boat to reach the site and attract the local community

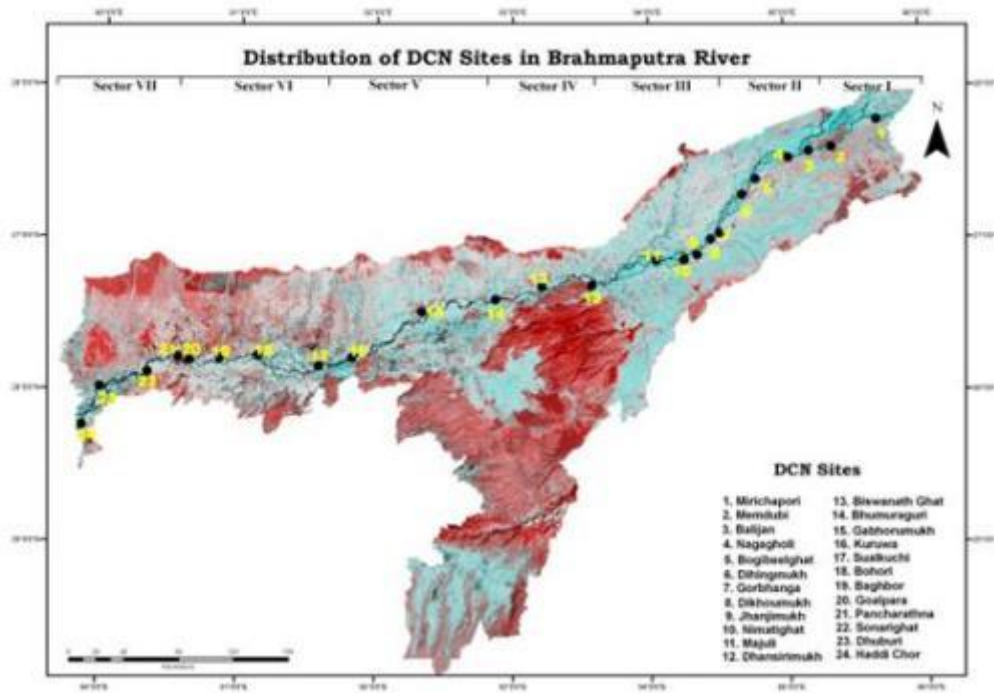


Fig-4: Distribution map of 24 DCN sites in Brahmaputra River. 6 other sites are in Kulsri and Subansiri River.



Fig-5: DCN training in February, 2010



Fig-6: March, 2011 DCN training



Fig-7: DCN Members in advance DCN training in November, 2011



Fig-8: Land-based dolphin and habitat monitoring practice for DCN members in Nov, 11
DCN training

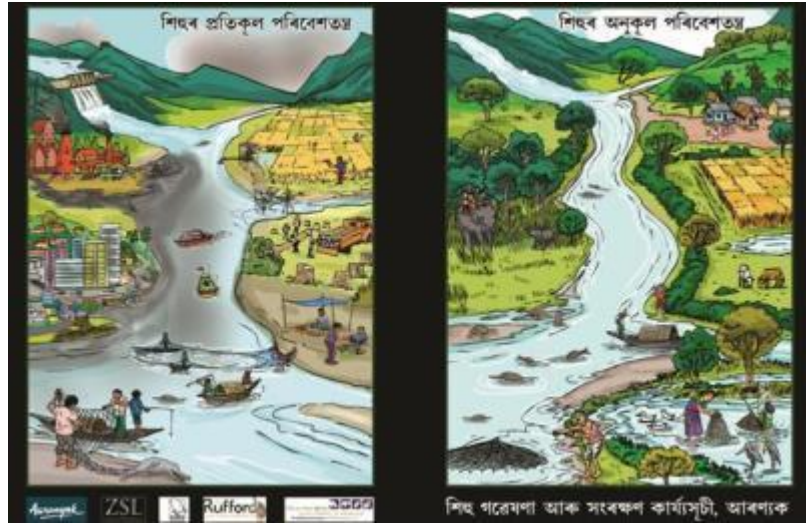


Fig-9: Posters developed by the Project for community awareness programme



Fig-10: Booklet developed by the Project for mass awareness campaign



Fig-11: Booklet pages turned into big flexes for education programme during the Dolphin Yatra. Here the school students were participating in the education programme



Fig-12: DRRT team in urgent conservation actions of three stranded dolphin in Dikhow River in Dec, 2011