

Project Update: May 2017

- A general survey was conducted to detect eight study sites along Marsa Alam region. The sites are Marsa Mubarak, Marsa Shoni El Kebeir, Marsa Abo Dabbab, Marsa Hermez, Marsa Eglia, Marsa Asalaya, Marsa Alam Port and Marsa Tondoba (Fig. 1).

- I visited the first site, Marsa Tondoba located 14 km south of Marsa Alam City to conduct a questionnaire survey with seven fishermen (Fig. 2 & 3). Information about dugong sightings was recorded.

- I visited north of Marsa Alam port and found feeding trails with different width. After measuring the trail width, i found that one is wide related to large dugong (Fig 3), and another trail is narrow related to small dugong (Fig 4).

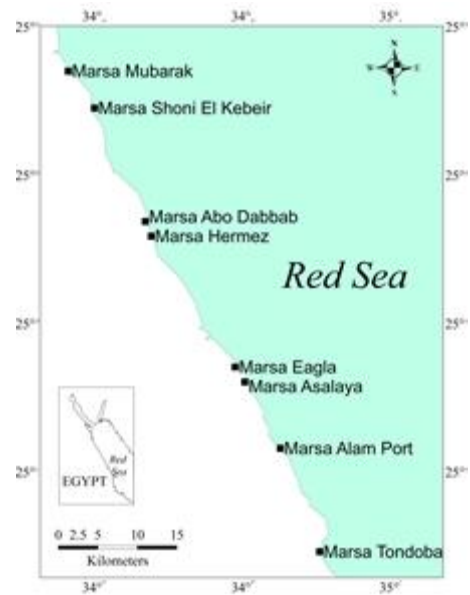


Figure 1: Map of study area along Marsa Alam coastline



Figure 2: Conducting questionnaire survey with fishermen at Tondoba village

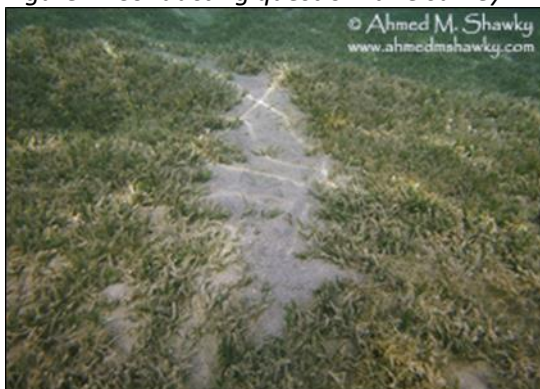


Figure 3: Feeding trail for large dugong



Figure 4: Feeding trail for small dugong